

# Certificate

## Certified Passive House Component

for cool, temperate climates; valid until 31.12.2015

Passive House Institute  
Dr. Wolfgang Feist  
64283 Darmstadt  
GERMANY

Category: **Window Frame**  
Manufacturer: **VIZUS D.O.O**  
**18000 Nis, SERBIA**  
Product name: **Vizus AT135**

This certificate was awarded based on the following criteria:

Given a  $U_g$  value of  $0.70 \text{ W}/(\text{m}^2\text{K})$  and a window size of 1.23 m by 1.48 m,

$$U_w = 0.78 \text{ W}/(\text{m}^2\text{K}) \leq 0.80 \text{ W}/(\text{m}^2\text{K})$$

Taking into account the installation based thermal bridges and provided that the installation is, with regard to the thermal bridges, equal or better than shown in the data sheet, the window meets the following criterion.

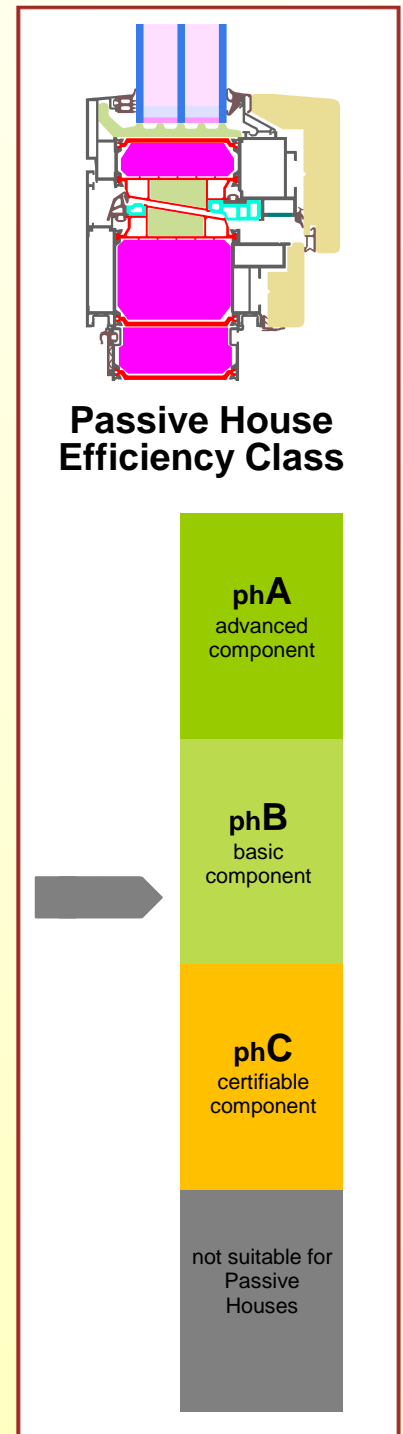
$$U_{w,\text{installed}} \leq 0.85 \text{ W}/(\text{m}^2\text{K})$$

### Thermal data

	$U_f$ -value [W/(m <sup>2</sup> K)]	Width [mm]	$\Psi_g$ [W/(mK)]	$f_{Rsi=0.25}$ [-]
Spacer	ULTIMATE Swisspacer*			0.74
Bottom	0.81	160	0.024	
Side/top	0.76	130	0.023	

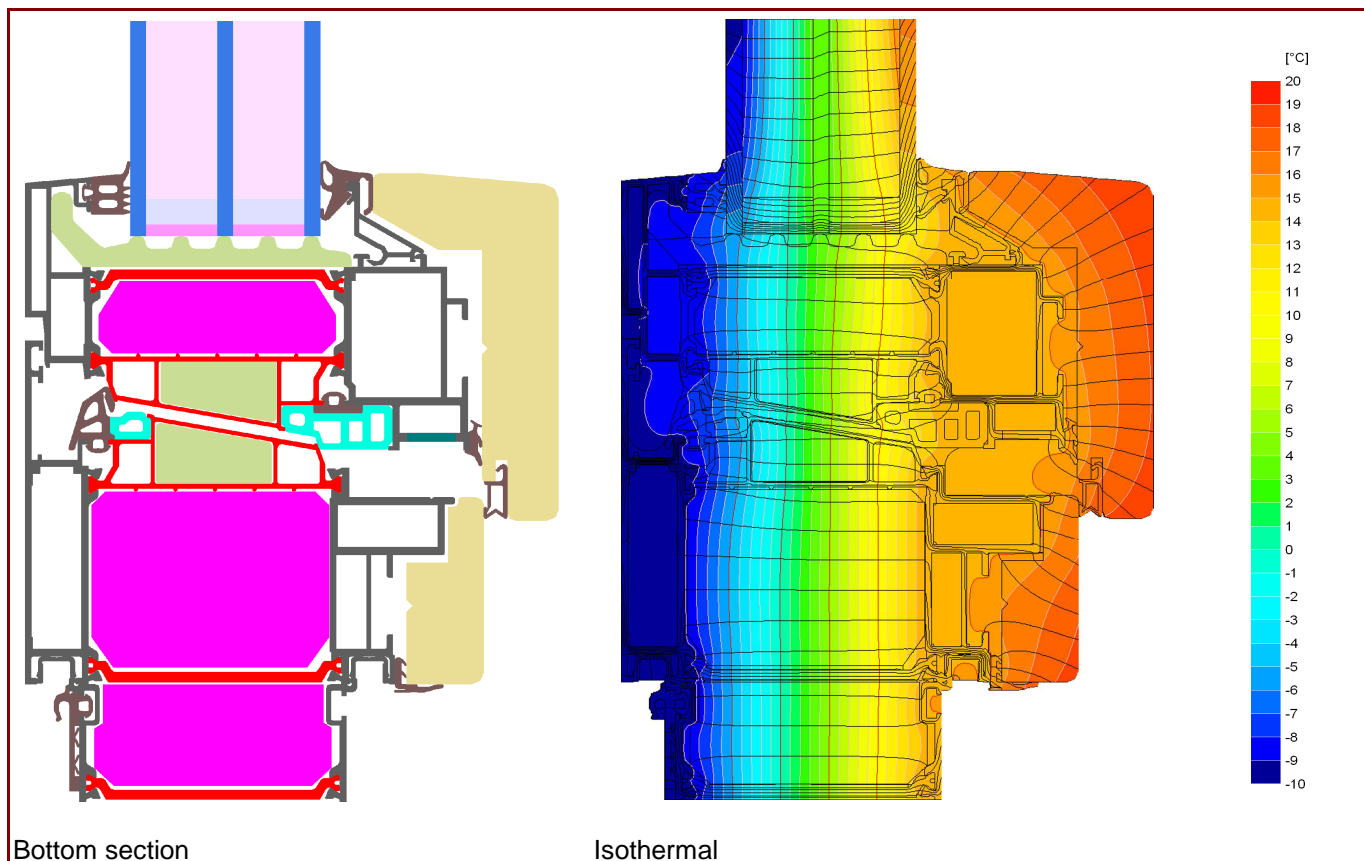
\*Spacers of lower thermal quality, especially those made of aluminium, lead to significantly higher thermal losses and lower temperature factors.

For further information, please see the data sheet



# Data Sheet VIZUS D.O.O, Vizus AT135

**Manufacturer** VIZUS D.O.O  
 Ruzmarina 15, 18000 Nis, SERBIA  
 Tel.: +381 18 577073  
 Email: info@vizus.rs, www.vizus.rs

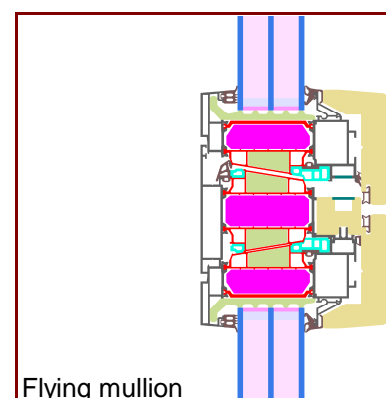


## Description

Timber-aluminium frame with thermal break of polyamide plastic with polystyrene insulation and rebate insulation of polyethylene foam. Pane thickness: 48 mm (4/18/4/18/4), Rebate depth: 18 mm.

## Thermal data for the window frame

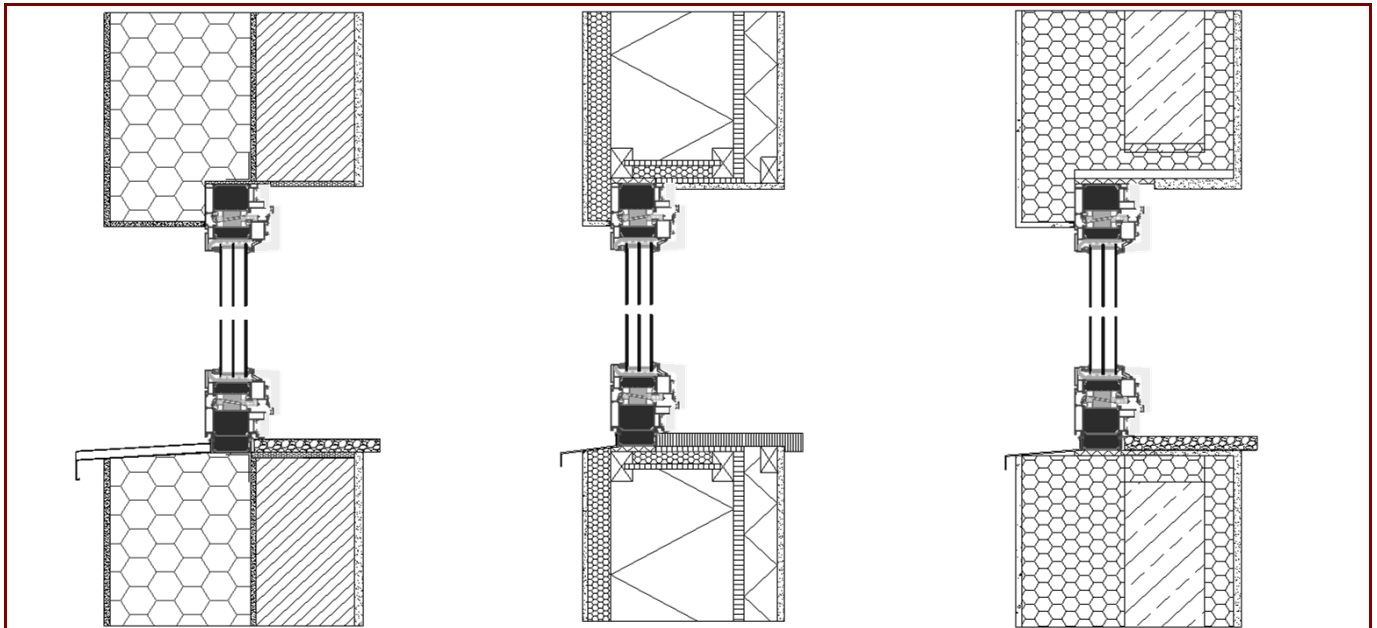
	$U_f$ -value [W/(m <sup>2</sup> K)]	Width [mm]	$\Psi_g$ [W/(mK)]	$f_{Rsi=0.25}$ [-]
Spacer	ULTIMATE Swisspacer*			
Bottom	0.81	160	0.024	0.74
Side/Top	0.76	130	0.023	
Flying Mullion	0.78	184	0.023	0.73



\* Spacers of lower thermal quality lead to higher thermal losses and lower glass edge temperatures.

# Data Sheet VIZUS D.O.O, Vizus AT135

## Installation



### Installation based thermal bridge $\Psi_{instal.}$ in Passive House suitable walls

		EIFS	Timber construction wall	Insulated formwork blocks
<b>Position</b>				
<b>Bottom</b>	[W/(mK)]	0.031	0.019	0.022
<b>Side/Top</b>	[W/(mK)]	0.015	0.024	0.010
<b><math>U_{W,instal.}</math></b>	[W/(m <sup>2</sup> K)]	0.84	0.85	0.82

### Explanatory notes

The window U-values were calculated based on a 1.23 m by 1.48 m window  $U_g = 0.70$  W/(m<sup>2</sup>K).  
If better glazing is used, the window U-values decrease as follows:

<b>U Glazing</b>	<b><math>U_g</math> [W/(m<sup>2</sup>K)]</b>	0.64	0.58	0.54
<b>U Window</b>	<b><math>U_w</math> [W/(m<sup>2</sup>K)]</b>	0.74	0.71	0.68

Depending on the thermal losses through opaque elements, transparent components are categorised according to efficiency classes. These thermal losses include the losses through the frame, the frame width, the thermal bridge at the glass edge as well as the length of the glass edge. Certificates for arctic regions are too valid vor cold, certificates for cold regions are too valid for cool, temperate zones.

Please ask the manufacturer for a detailed report containing all calculations and results.  
For further information, please visit [www.passivehouse.com](http://www.passivehouse.com) or [www.passipedia.org](http://www.passipedia.org).